

# Proposal 33

Create draw hunt for goats on the Cleveland Peninsula in Unit 1A and 1B

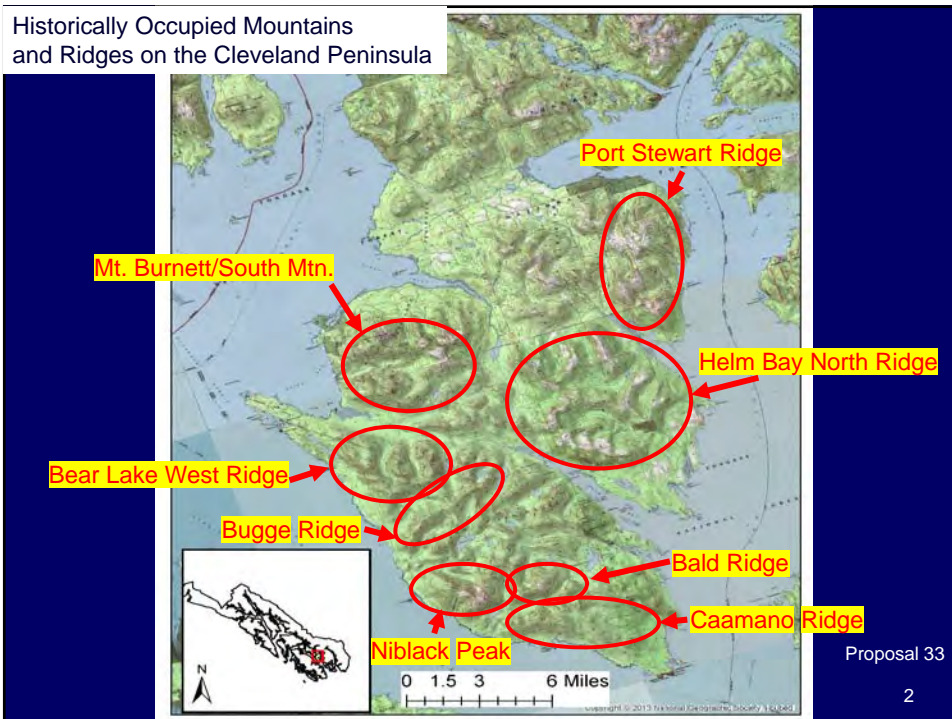
Public Proposal

Department Recommendation:

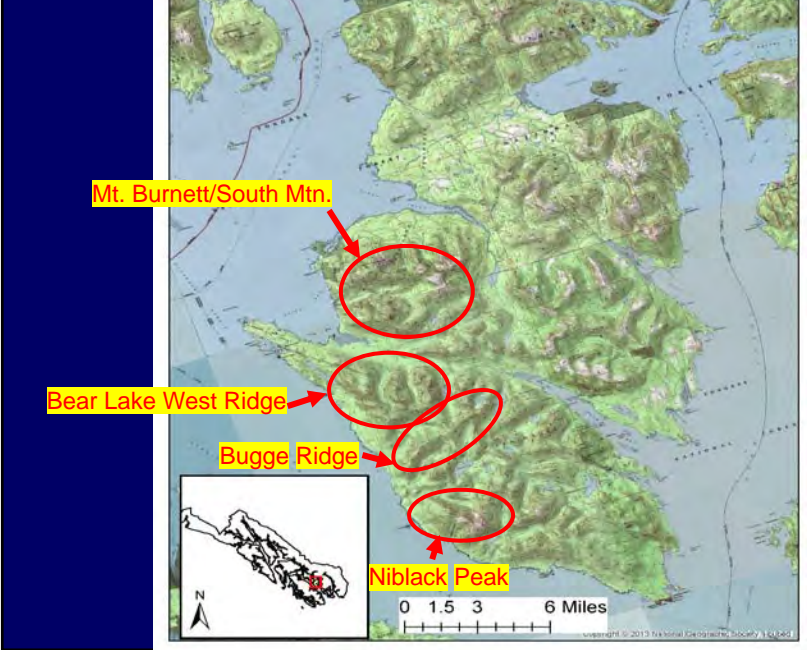
**Oppose**

**AC Recommendation:**

Ketchikan AC: Oppose



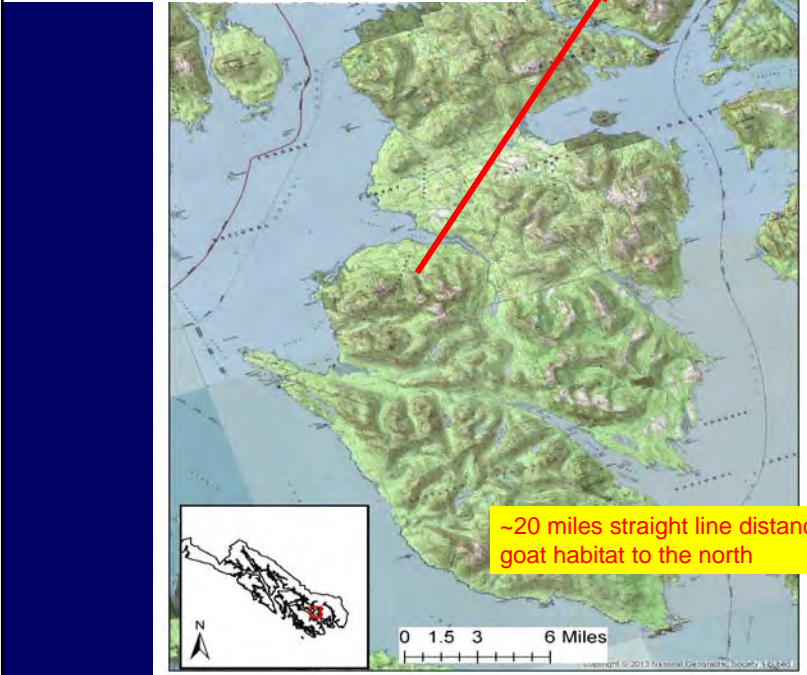
Current Occupied Mountains and Ridges on the Cleveland Peninsula



Proposal 33

3

Isolated population on the Cleveland Peninsula



Proposal 33

4

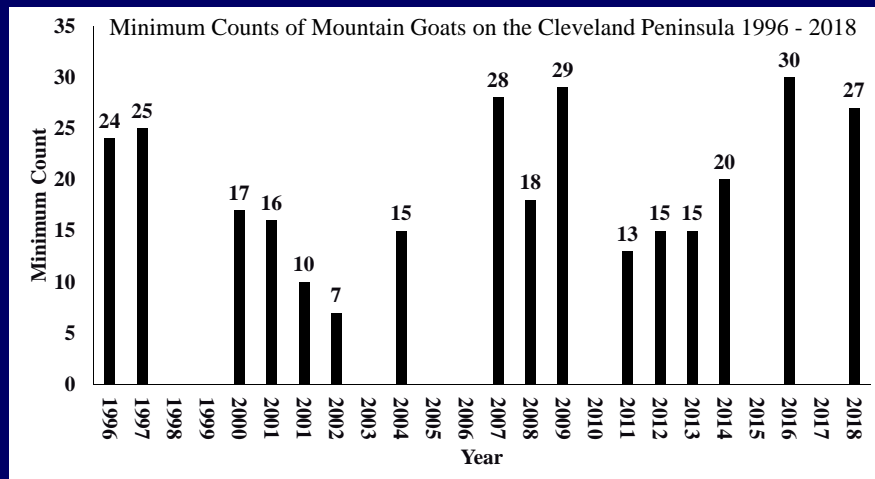
## Discussion

- Former regulation: 1949-2002 two goats
- Management strategy: 100 goats, 6 points total, nanny = 2 points, and billies =1 point
- 1996-2018: minimum counts of 7-30 goats
- Sightability correction for 2012-2014: 30-40 goats
- ADF&G best estimate 40-50 goats

5

Proposal 33

## Discussion



6

Proposal 33

## Discussion

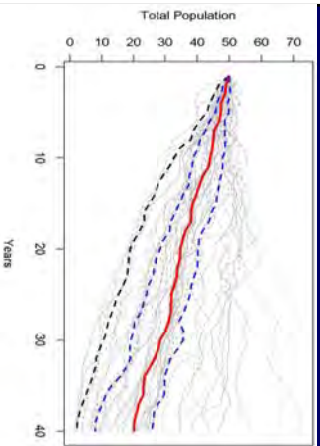
- Research suggests no harvest for population <50 animals
- Minimum of 100 goats to have hunting season
- Research suggests harvest of 1-4% of native population
- Since 1982, reduction from eight to four occupied mountains
- Research suggests only 1 immigrant every 10-15 years

Proposal 33

7

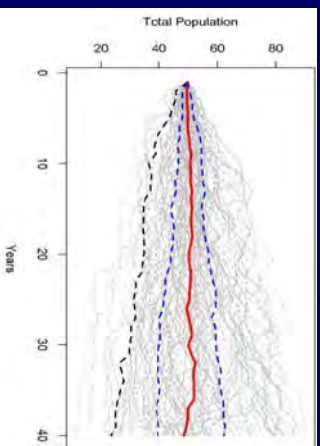
## Discussion

### Initial Population = 50 goats



Annual Harvest = 2 goats

Results: 40% decrease in population  
94% of simulations declined



Annual Harvest = 1 goat

Results: 2% decrease in population  
53% of simulations declined

8

Proposal 33

## Proposal 33

Create draw hunt for goats on the  
Cleveland Peninsula in Unit 1A and 1B

Public Proposal

Department Recommendation:

**Oppose**

**AC Recommendation:**

Ketchikan AC: Oppose

9

Proposal 33

## Proposal 34

Create registration hunt for goats on the  
Cleveland Peninsula in Unit 1A and 1B

Public Proposal

Department Recommendation:

**Oppose**

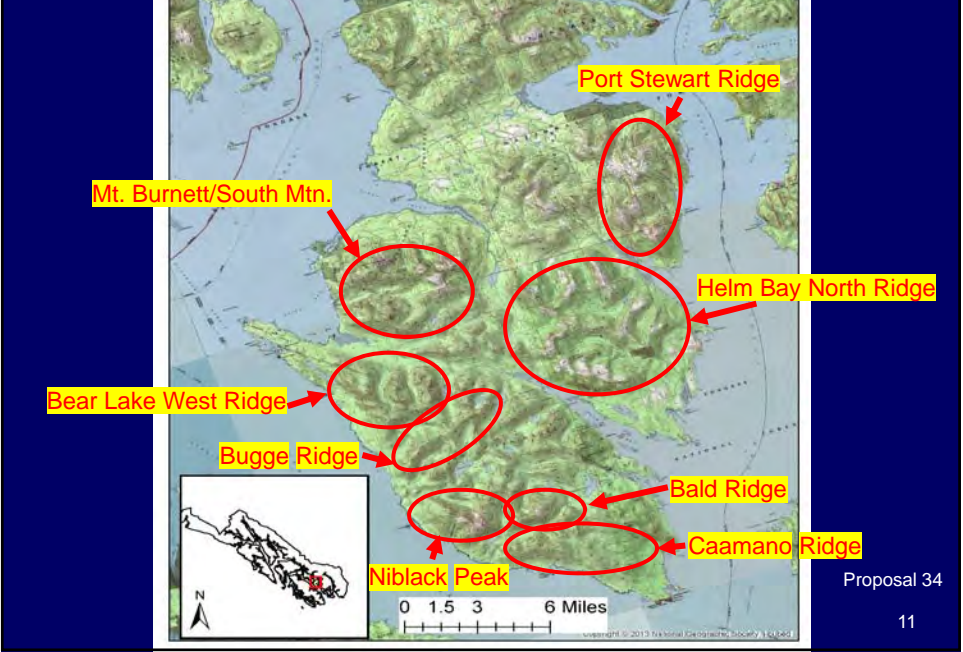
**AC Recommendation:**

Ketchikan AC: Oppose

10

Proposal 34

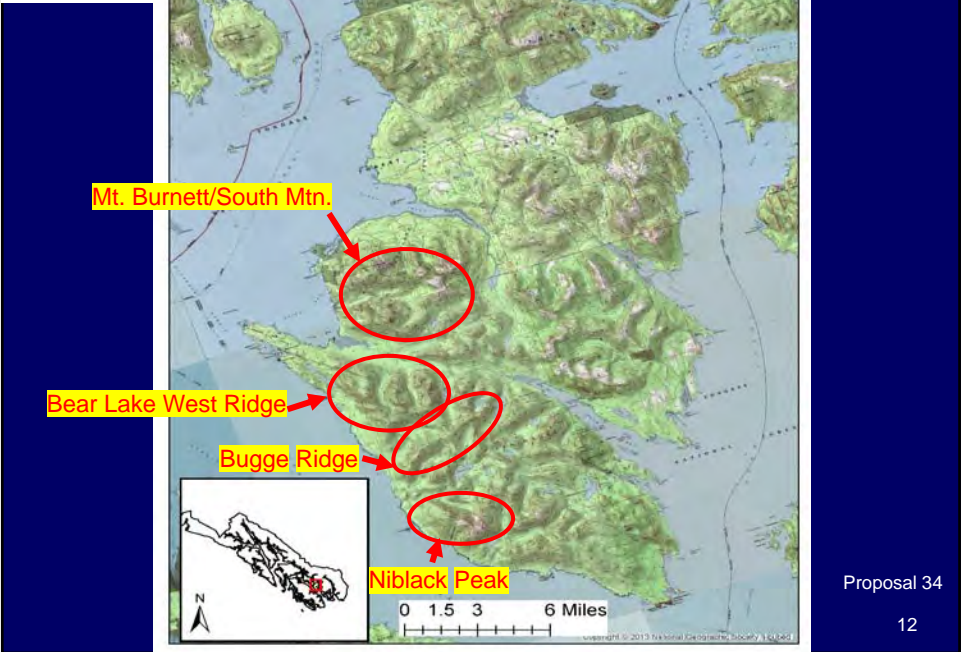
Historically Occupied Mountains and Ridges on the Cleveland Peninsula



Proposal 34

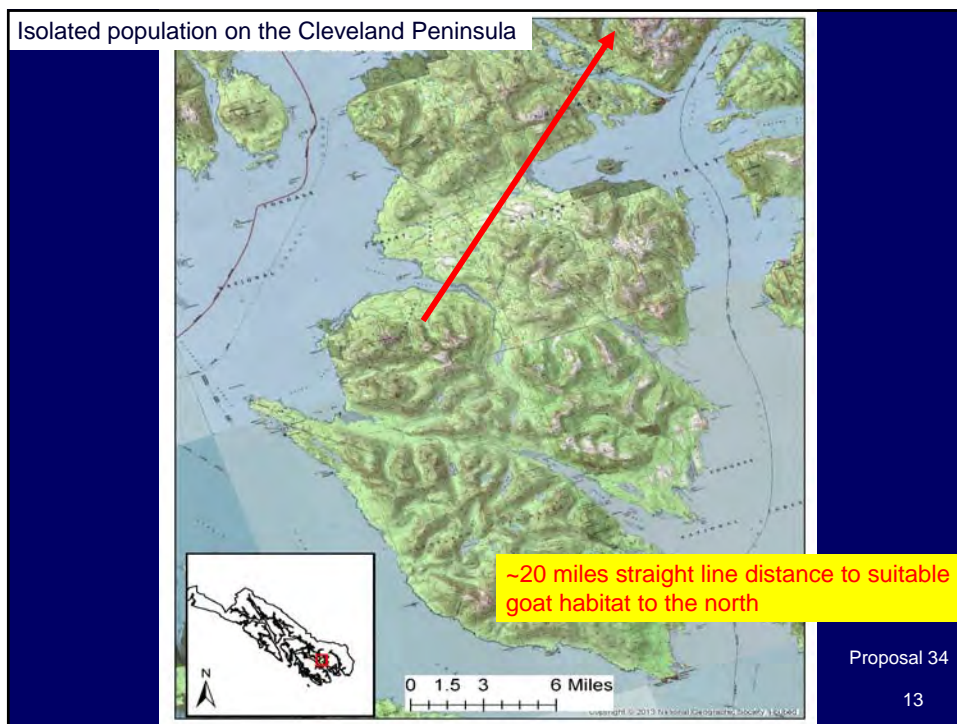
11

Current Occupied Mountains and Ridges on the Cleveland Peninsula



Proposal 34

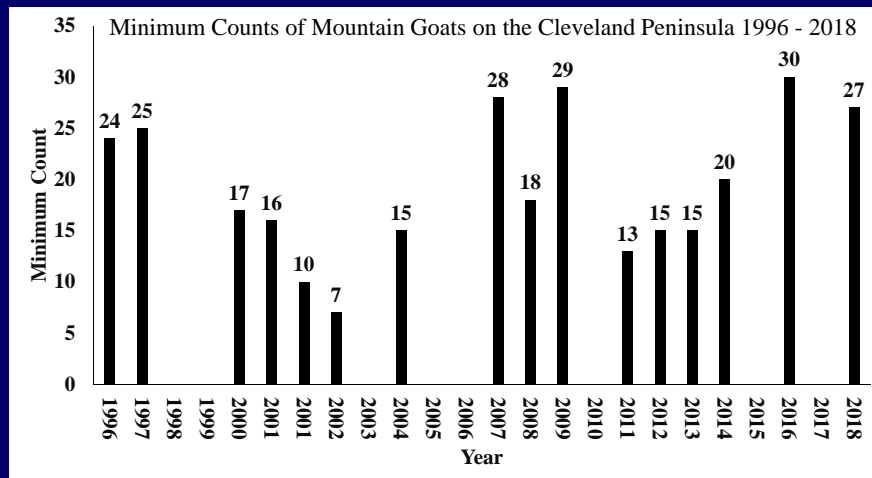
12



## Discussion

- Former regulation: 1949-2002 two goats
- Management strategy: 100 goats, 6 points total, nanny = 2 points, and billies = 1 point
- 1996-2018: minimum counts of 7-30 goats
- Sightability correction for 2012-2014: 30-40 goats
- ADF&G best estimate 35-50 goats

## Discussion



15

Proposal 34

## Discussion

- Research suggests no harvest for population <50 animals
- Minimum of 100 goats to have hunting season
- Research suggests harvest of 1-4% of native population
- Since 1982, reduction from nine to five occupied mountains
- Research suggests only 1 immigrant every 10-15 years

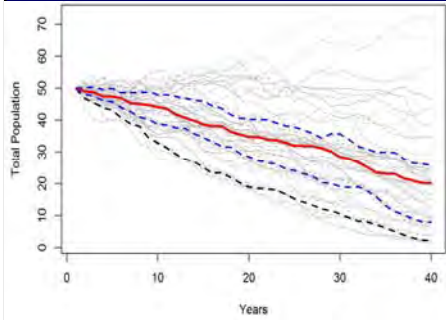
16

Proposal 34

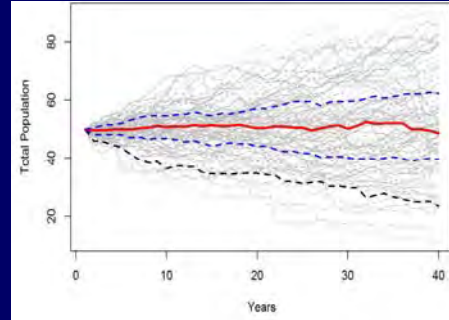


## Discussion

### Initial Population = 50 goats



**Annual Harvest = 2 goats**  
**Results: 40% decrease in population**  
**94% of simulations declined**



**Annual Harvest = 1 goat**  
**Results: 2% decrease in population**  
**53% of simulations declined**

17

Proposal 34

## Discussion

- Registration hunt gives less control over hunt

18

Proposal 34

## Proposal 34

Create registration hunt for goats on the Cleveland Peninsula in Unit 1A and 1B

Public Proposal

Department Recommendation:

**Oppose**

**AC Recommendation:**

Ketchikan AC: Oppose

19

Proposal 34

## Proposal 35

Eliminate the mountain goat draw hunt DG007, and add to registration hunt RG001. Increase draw tag allotment

Department Proposal

Department Recommendation:

**Neutral**

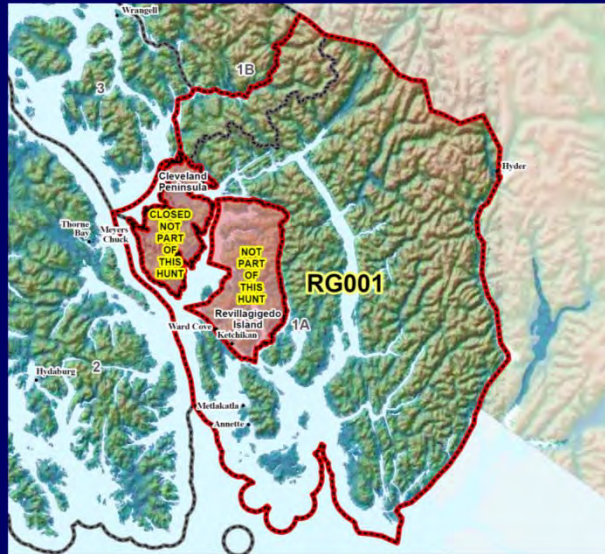
**AC Recommendation:**

Ketchikan AC: Support

20

Proposal 35

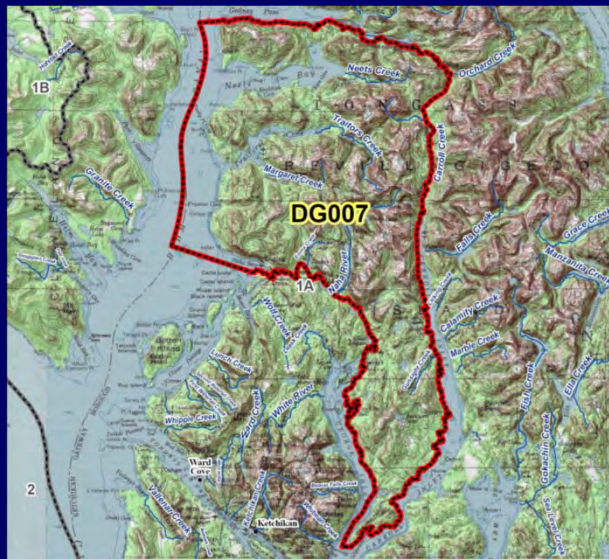
# Discussion



21

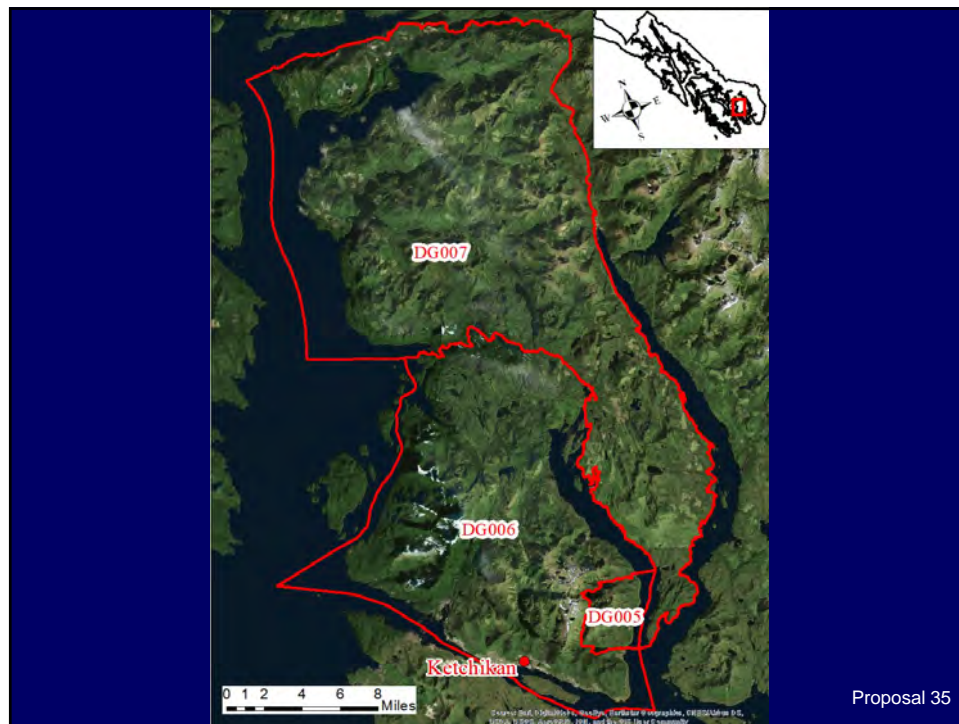
Proposal 35

# Discussion



22

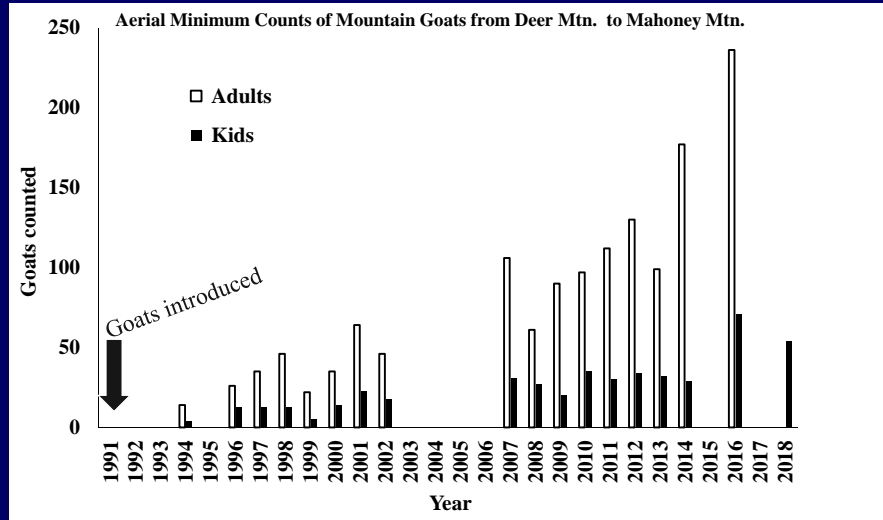
Proposal 35



## Discussion

- Increase draw tag allotment from up to 25 permits per year to up to 50
- Remove DG007, integrate into RG001
- Introduced population high on Revilla
- Provide increase opportunity to popular mountain goat hunt with easy access

## Discussion



25

Proposal 35

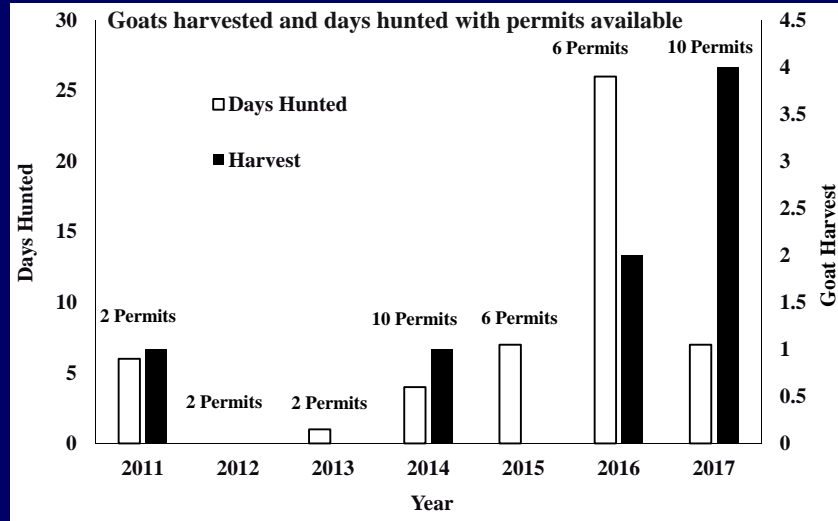
## Discussion

- DG007 hunt created in 2011
- Mean harvest <2 goats per season

26

Proposal 35

## Discussion



27

Proposal 35

## Discussion

- Access currently limited to boat and airplane
- Future road may provide limited access
- Provides more opportunity for goat hunting
- Relieve grazing pressure on wintering grounds

28

Proposal 35

## Proposal 35

Eliminate the mountain goat draw hunt DG007, and add to registration hunt RG001. Increase draw tag allotment

Department Proposal

Department Recommendation:

**Neutral**

**AC Recommendation:**

Ketchikan AC: Support

29

Proposal 35

## Proposal 36

Change deer bag limit from two bucks to four bucks on the Cleveland Peninsula

Public Proposal

Department Recommendation:

**Neutral**

**AC Recommendation:**

Ketchikan AC: Support

30

Proposal 36

## Discussion



31

Proposal 36

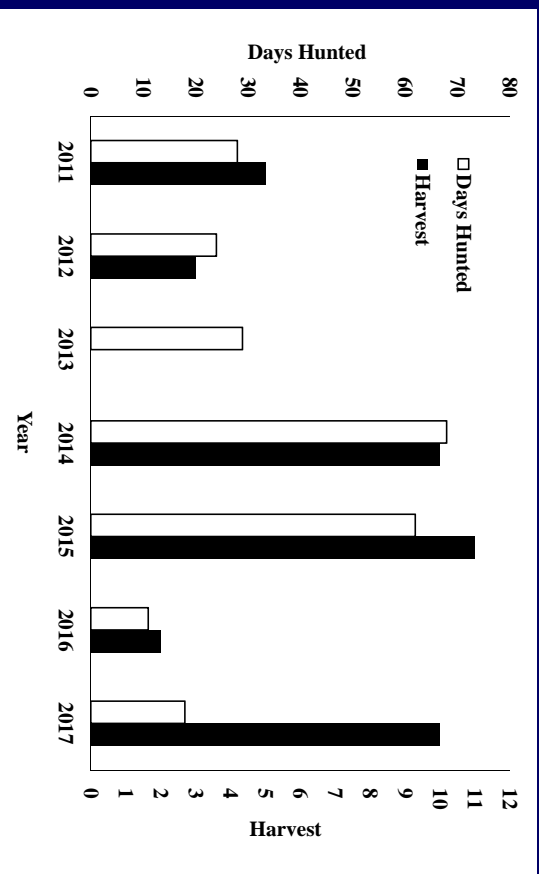
## Discussion

- Bag limit 4 deer until RY2009 season
- Bag limit currently 2 deer on Cleveland Peninsula

32

Proposal 36

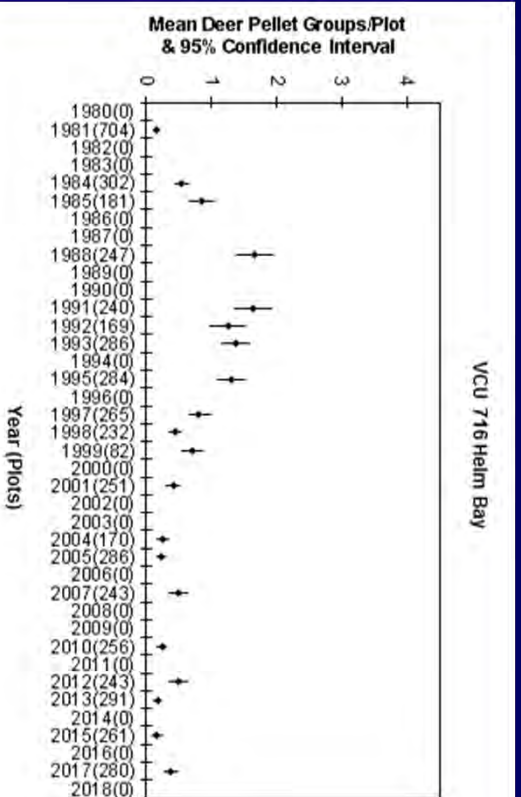




## Discussion

33

Proposal 36



## Discussion

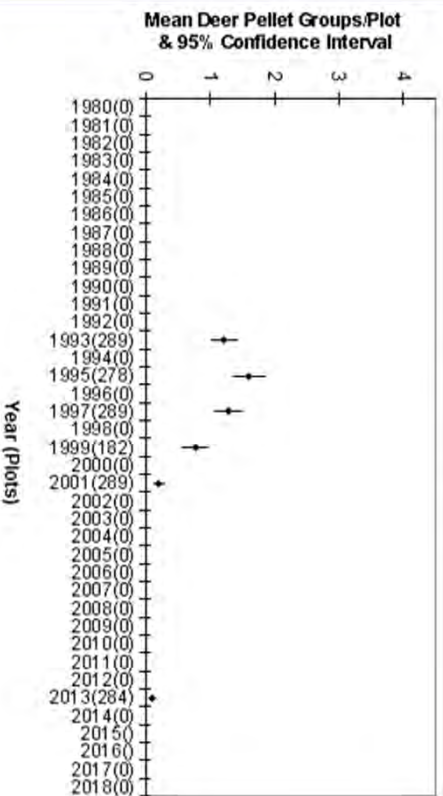
VCU 716 Helm Bay

34

Proposal 36

## Discussion

VCU 719 Port Stewart



36

Proposal 36

## Discussion

- Deer abundance remains low after hard winters from 1995-1998, 2006-2008, and 2011
- Snowfall higher on Cleveland
- Deep snow causes high deer mortality
- Wolf harvest low despite trapper effort

36

Proposal 36

## Proposal 36

Change deer bag limit from two bucks to four bucks on the Cleveland Peninsula

Public Proposal

Department Recommendation:

**Neutral**

**AC Recommendation:**

Ketchikan AC: Support

37

Proposal 36

## Proposal 37

Reduce the harvest objective for deer in Unit 1A from 700 to 350-400

Department Proposal

Department Recommendation:

**Neutral**

**AC Recommendation:**

Ketchikan AC: Oppose

38

Proposal 37

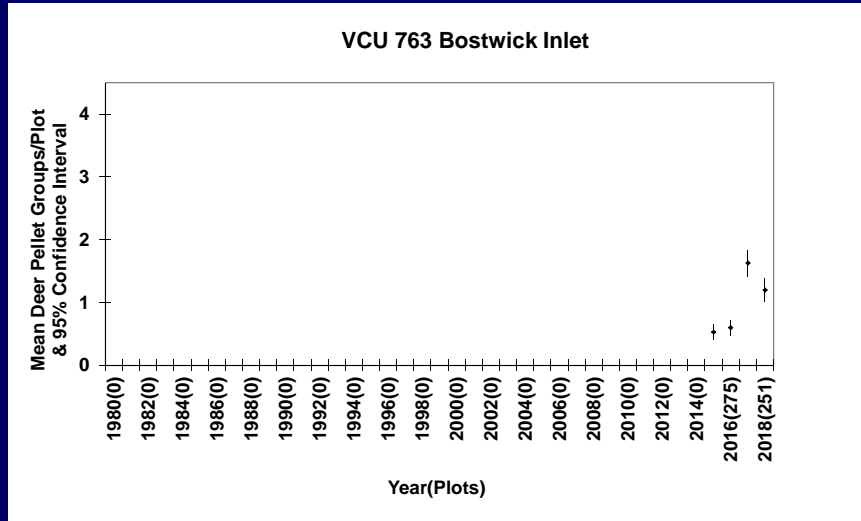
## Discussion

- Harvest objective based on mean harvest from 1994-1998 plus 10%.
- Current harvest objective has not been met for past 20 years (1998 – 2017)
- Changing habitat influencing deer carrying capacity

## Discussion

Biogeographic Province	High-volume productive old growth <800 ft. elevation	Large-tree productive old growth <800 ft. elevation
North Misty Fjords	91%	85%
South Misty Fjords	98%	96%
Revilla Island/Cleveland Peninsula	81%	62%

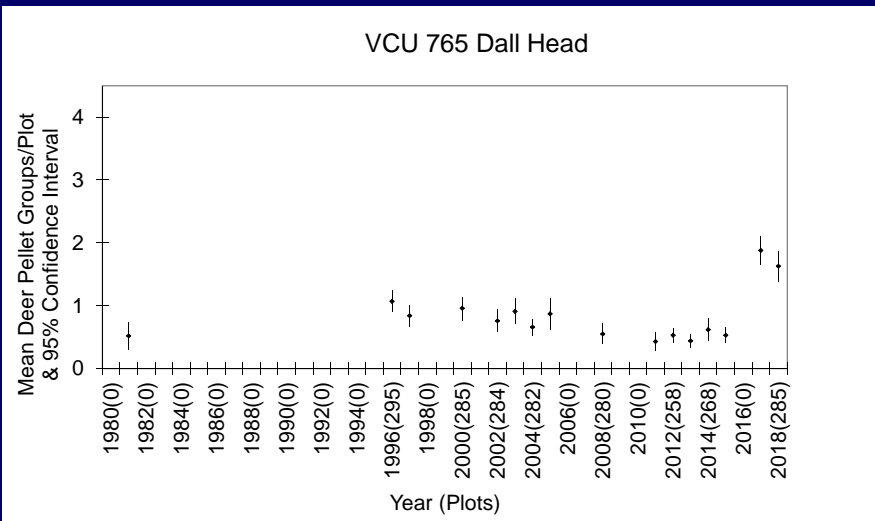
## Discussion



41

Proposal 37

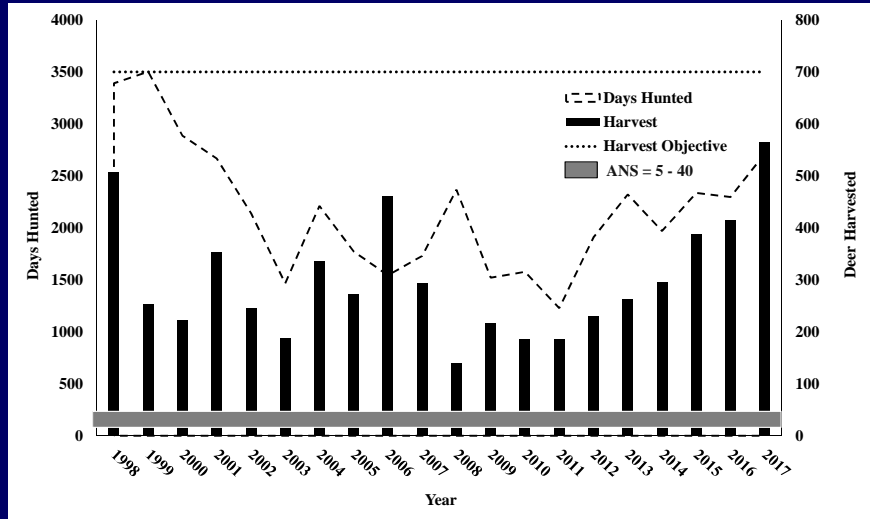
## Discussion



42

Proposal 37

## Discussion



43

Proposal 37

## Discussion

- Mean harvest from 1998-2017 was 301 deer.
- No proven options for improving habitat.
- The Department does not believe the current harvest objective (700 deer) can be consistently met.
- From 1998-2017 harvest exceeded 350 deer six times.

44

Proposal 37

## **Proposal 37**

Reduce the harvest objective for deer in  
Unit 1A from 700 to 350-400

Department Proposal

Department Recommendation:

**Neutral**

**AC Recommendation:**

Ketchikan AC: Oppose

45

Proposal 37

## **Proposal 38**

Extend the trapping season for beaver in  
Unit 1A

Department Proposal

Department Recommendation:

**Neutral**

**AC Recommendation:**

Ketchikan AC: Support

46

Proposal 38

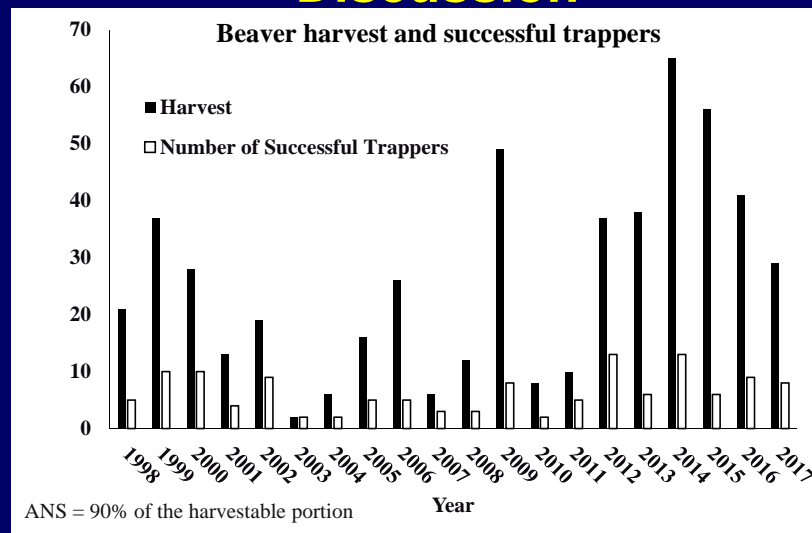
## Discussion

- Current trapping season: Nov. 1 – April 30
- Proposed change: Nov. 1 – May 15
- Estimated increase in harvest of two beaver annually
- This would misalign the trapping season in 1A from the rest of Region 1
- 1998-2017 mean harvest was 26 beavers

47

Proposal 38

## Discussion

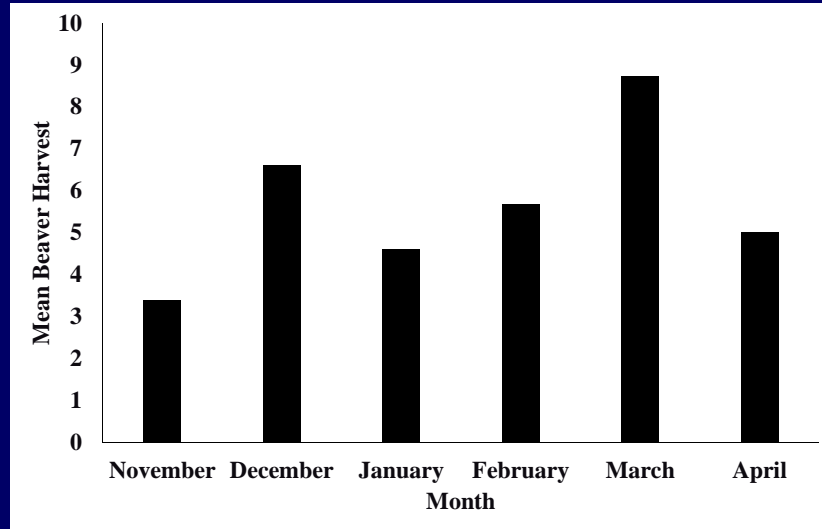


48

Proposal 38



## Discussion



49

Proposal 38

## Proposal 38

Extend the trapping season for beaver in  
Unit 1A

Department Proposal

Department Recommendation:

**Neutral**

**AC Recommendation:**

Ketchikan AC: Support

50

Proposal 38

## Proposal 39

### Shorten the hunting season for deer in Unit 2

Advisory Committee Proposal

Department Recommendation:

**Neutral**

**AC Recommendation:**

Craig AC: Support

Ketchikan AC: Oppose

51

Proposal 39

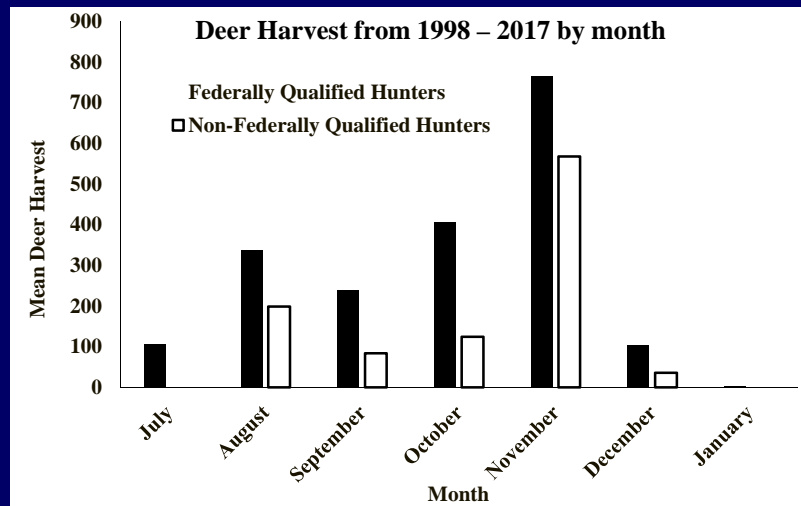
## Discussion

- Current regulations: four buck bag limit from Aug. 1 – Dec. 31.
- Proposed reduction: Aug. 1 – Nov. 30.
- Primarily limits hunting opportunity for non-federally qualified hunters.
- ~78% of land in Unit 2 is USFS, ~22% state and private.
- Mean harvest from 1998-2017 for non-federally qualified hunters in December was 42 deer .

52

Proposal 39

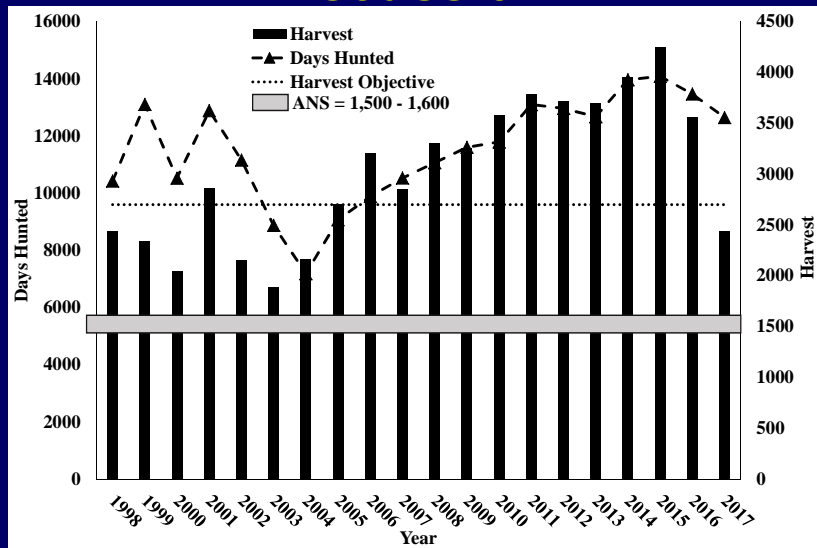
## Discussion



53

Proposal 39

## Discussion



54

Proposal 39

## Discussion

- Federal Subsistence Board reduced non-federally qualified hunters bag limit in Unit 2 to two bucks.

55

Proposal 39

## Proposal 39

Shorten the hunting season for deer in  
Unit 2

Advisory Committee Proposal

Department Recommendation:

**Neutral**

**AC Recommendation:**

Craig AC: Support

Ketchikan AC: Oppose

56

Proposal 39

## Proposal 40

Reduce non-resident bag limit in Unit 2  
to two deer

Advisory Committee Proposal

Department Recommendation:

**Neutral**

**AC Recommendation:**

Craig AC: Support

Ketchikan AC: Oppose

57

Proposal 40

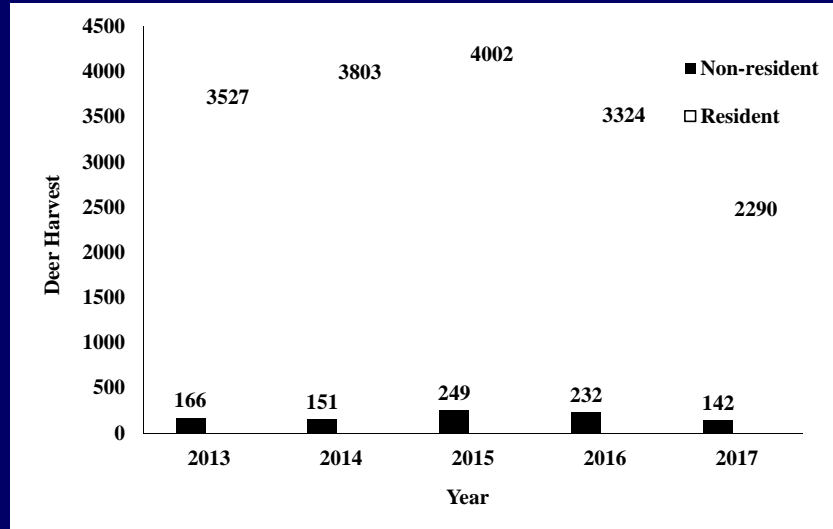
## Discussion

- Non-resident harvest is a small portion of overall harvest
- Mean annual harvest by non-residents is 9 deer on 3<sup>rd</sup> and 4<sup>th</sup> tags
- Increase in price of non-resident hunting license and locking tag for deer

58

Proposal 40

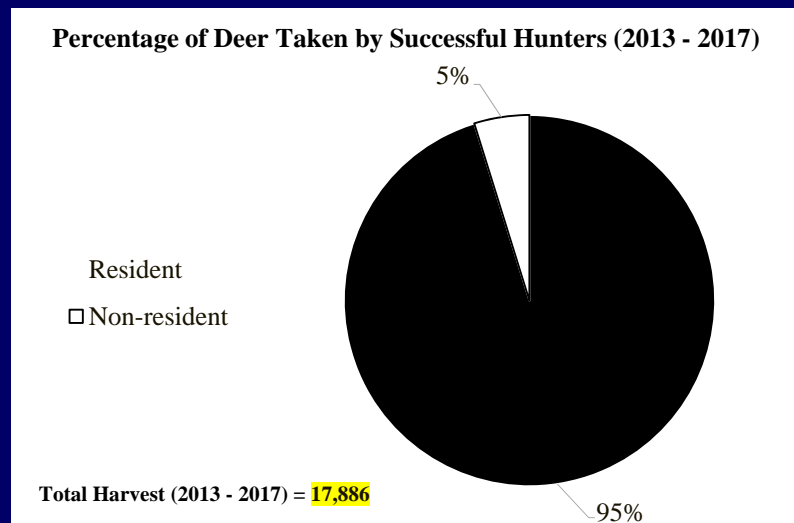
## Discussion



59

Proposal 40

## Discussion

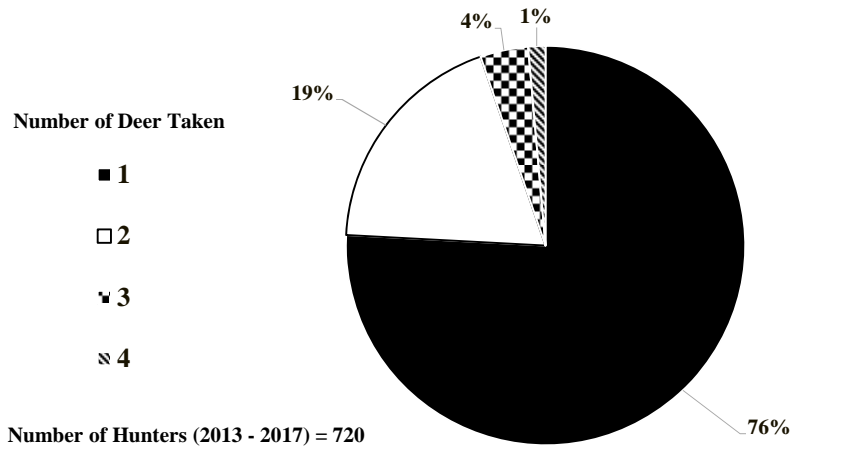


60

Proposal 40

## Discussion

Number of Deer Taken by Successful Non-Resident Hunters (2013 - 2017)



61

Proposal 40

## Proposal 40

Decrease non-resident deer bag limit to two in Unit 2

Advisory Committee Proposal

Department Recommendation:

**Neutral**

**AC Recommendation:**

Craig AC: Support

Ketchikan AC: Oppose

62

Proposal 40

## Proposal 41

Require attaching harvest ticket to deer in  
Unit 2

Craig Advisory Committee Proposal

Department Recommendation:

**Neutral**

**AC Recommendation:**

Craig AC: Support  
Ketchikan AC: Oppose

63

Proposal 41

## Discussion

- Craig AC indicated that harvest tickets are not being validated
- Prior radio-collar deer study indicated 67% (6/9 collared deer) deer were illegally harvested

64

Proposal 41



## Discussion

- Paper tags may fall off of deer while in transit
- 2004 BOG meeting, similar proposal failed based on cost
- Alternative tag?

65

Proposal 41

## Discussion



66

Proposal 41

## Discussion

- Mean number of deer hunters from in Unit 2 was **3,937** from 2008-2017
- Assuming 5 tags per hunter at \$0.10 per tag = **~\$1,900/year**

67

Proposal 41

## Proposal 41

Require attaching harvest ticket to deer in  
Unit 2

Craig Advisory Committee Proposal

Department Recommendation:

**Neutral**

**AC Recommendation:**

Craig AC: Support

Ketchikan AC: Oppose

68

Proposal 41

## Proposal 42

### Change harvest guideline level for wolves for Unit 2

SE Alaska Subsistence Regional Advisory  
Council Proposal (Withdrawn)

Department Recommendation:

**Neutral**

**AC Recommendation:**

Craig AC: TNA  
Ketchikan AC: TNA

69

Proposal 42

## Discussion

- This proposal would increase the Harvest Guideline Level (HGL) from 20% to 30% of the most recent population estimate
- The author of this proposal submitted a letter to the Board of Game to withdraw it in favor of Department proposal 43.

70

Proposal 42

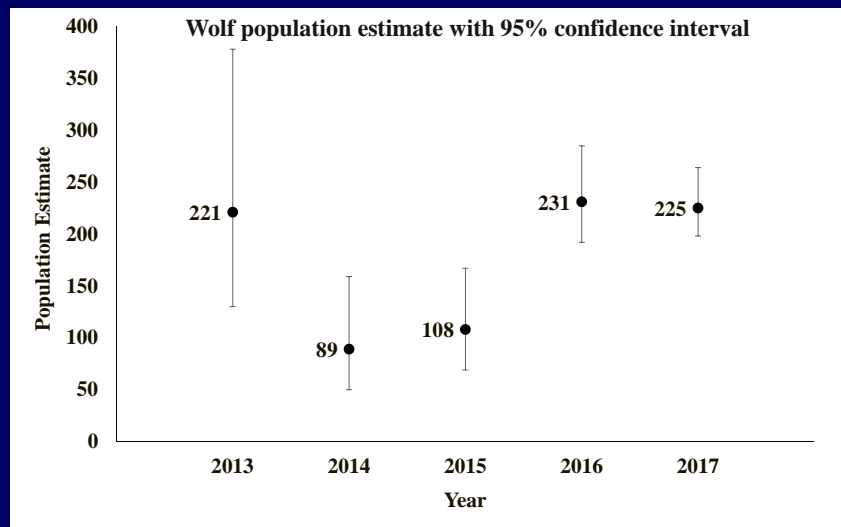
## Discussion

- Initial HGL adopted in 1997 for 25% of population annually
- Changed to 30% in 2001
- Lowered to 20% in 2015
- Reduced based on low wolf population estimate for Unit 2
- Population has recovered to current estimate of 225 wolves

71

Proposal 42

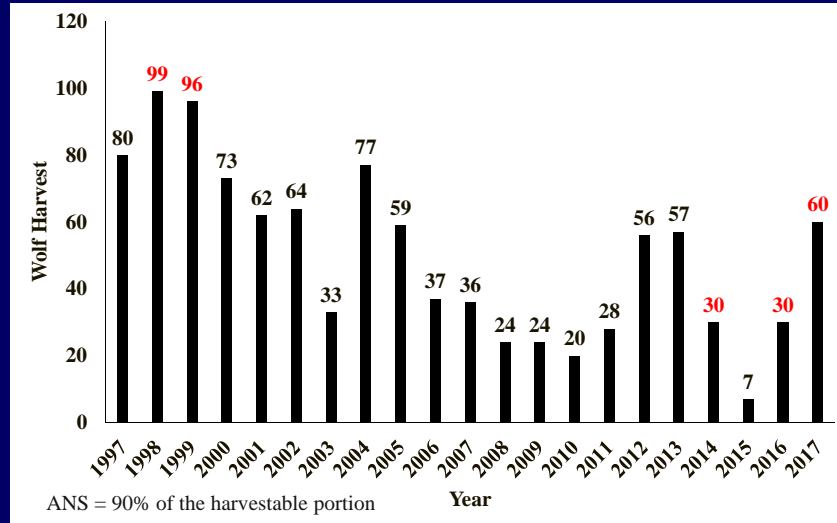
## Discussion



72

Proposal 42

## Discussion



73

Proposal 42

## Discussion

- Unit 2 population varies more than others due to insular population
- Limited dispersal
- Road and beach access to wolves
- Federal seasons longer than State

74

Proposal 42

## Proposal 42

Change wolf harvest guideline level for  
wolves for Unit 2

SE Alaska Subsistence Regional Advisory  
Council Proposal

Department Recommendation:

**Neutral**

**AC Recommendation:**

Craig AC: TNA  
Ketchikan AC: TNA

75

Proposal 42

## Proposal 43

Manage Harvest of Unit 2 Wolves to  
Meet a Population Objective

Department Proposal

Department Recommendation:

**Support**

**AC Recommendation:**

Craig AC: Support Sitka AC: Support  
Ketchikan AC: Support Wrangell AC: Support  
East POW AC: Support

76

Proposal 43

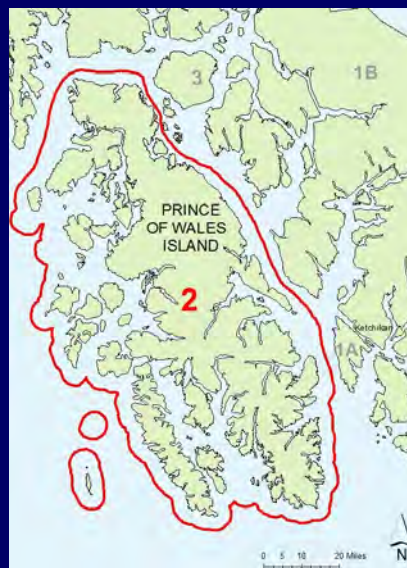
## Effect

- This proposal would change the harvest management strategy for Unit 2 wolves.
- Current: Harvest guideline level (HGL) that is a percentage of the estimated population.
- Proposed: Manage harvest to maintain the population within an objective range.

77

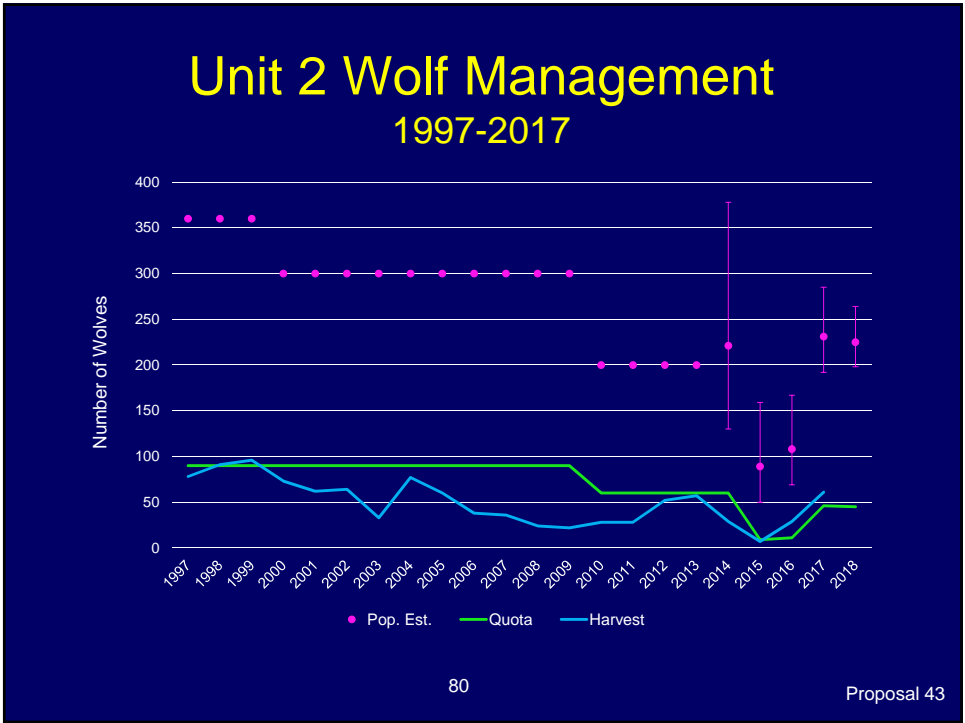
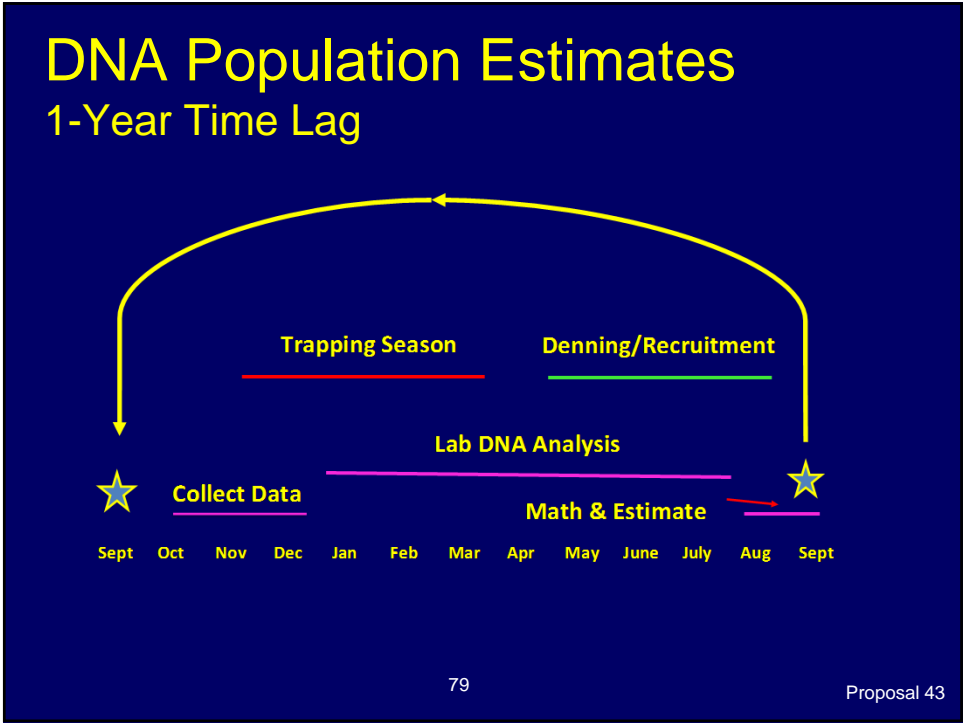
Proposal 43

## Game Management Unit 2



78

Proposal 43





## Current Management Strategy

- Focuses only on the number of wolves to harvest. Quotas and EOs.
- No goal for the population.
- Leaves ADF&G to determine minimum size of the population.
  - ❖ Population size should be determined through a public process.

81

Proposal 43

## New Unit 2 Wolf Management Strategy

- Board establishes a population objective range.
- ADF&G will manage harvest to maintain population within that range.
- Harvest management decisions guided by a written management strategy.

82

Proposal 43

## Population Objectives and Managing Harvest

### Harvest Management

**Zone 4: Pop > Objective**  
Up to 4-month season.

**Zone 3: Pop = Objective**  
Up to 2-month season.

**Zone 2: Pop < Objective**  
Up to 6-week season.

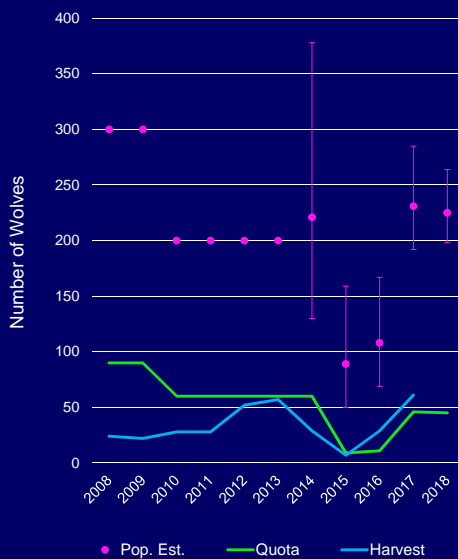
**Zone 1: Pop << Objective**  
Season closed until  
population increases to  
> XXX wolves.

### Estimated Population



83

Proposal 43



### Harvest Management

**Zone 4: Pop > Objective**  
Up to 4-month season.

**Zone 3: Pop = Objective**  
Up to 2-month season.

**Zone 2: Pop < Objective**  
Up to 6-week season.

**Zone 1: Pop << Objective**  
Season closed until  
population increases to  
XXX wolves.

### Estimated Population



84

Proposal 43

## **Proposal 43**

**Manage Harvest of Unit 2 Wolves to Meet a Population Objective**

Department Proposal

**Department Recommendation:**

Support

**AC Recommendation:**

Craig AC: Support Sitka AC: Support  
Ketchikan AC: Support Wrangell AC: Support  
East POW AC: Support

85

Proposal 43

## **Proposal 44**

**Extend Unit 2 wolf trapping season**

Craig Advisory Committee Proposal

**Department Recommendation:**

Neutral

**AC Recommendation:**

Craig AC: Support  
Ketchikan AC: Support

86

Proposal 44

## Discussion

- Current wolf trapping season in Unit 2  
Dec. 1 – Mar. 31
- Proposed extension of 2 weeks:  
Nov. 15 – Mar. 31

87

Proposal 44

## Discussion

### Pros

- Align Federal and State seasons
- Tide sets possible earlier

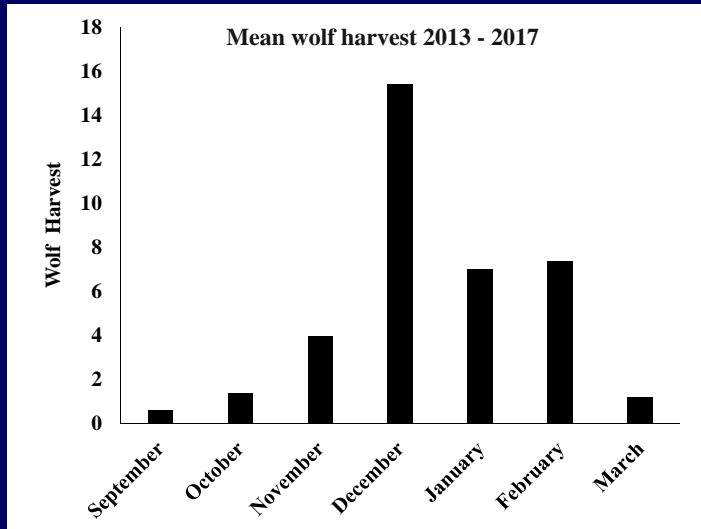
### Cons

- Reach quota faster

88

Proposal 44

## Discussion



89

Proposal 44

## Proposal 44

Extend Unit 2 wolf trapping season  
Craig Advisory Committee Proposal

Department Recommendation:

**Neutral**

**AC Recommendation:**

Craig AC: Support  
Ketchikan AC: Support

90

Proposal 44